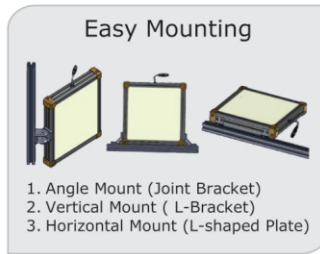
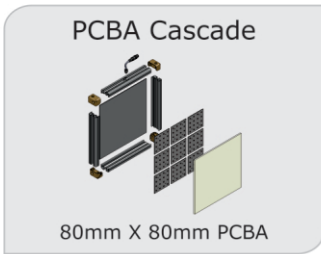
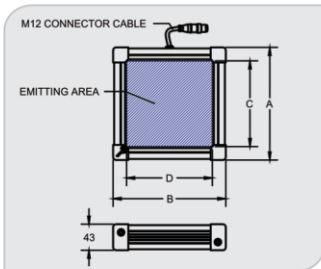
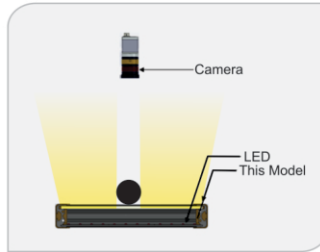
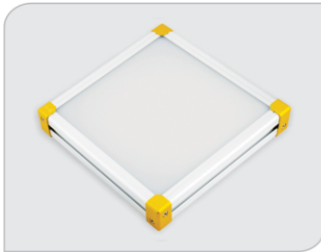


# NECTO SERIES – High Intensity Back Light

HBBX series provide wide area of diffused back lighting. The LED arranged in a dense array and shine into a diffuser. Cascade able PCB based on 80mm X 80mm PCB size.



## DIMENSIONS (MM)

MODEL	A	B	C	D	COLOR	VOLTAGE/ WATT	CURRENT	WEIGHT (g)
HBBX-00-160X160-X	186.2	186.2	147	147		24V / 11.52W 24V / 12.00W	480mA 500mA	1170
HBBX-00-160X240-X	186.2	266.2	147	227		24V / 17.28W 24V / 18.00W	720mA 750mA	1500
HBBX-00-160X320-X	186.2	346.2	147	307		24V / 23.04W 24V / 24.00W	960mA 1000mA	1870
HBBX-00-240X240-X	266.2	266.2	227	227		24V / 25.92W 24V / 27.00W	1080mA 1125mA	1900
HBBX-00-240X320-X	266.2	346.2	227	307		24V / 34.56W 24V / 36.00W	1440mA 1500mA	2280
HBBX-00-320X320-X	346.2	346.2	307	307		24V / 48.00W 24V / 46.08W	2000mA 1920mA	2880